



South Hill Park, Hampstead NW3

A beautiful 3 bedroom family house which enjoys stunning views over Hampstead Heath Ponds.

The property has an impressive 37' ground floor kitchen/living space with high ceilings and large French windows opening to the west facing garden, overlooking Hampstead Heath.

37' living space/kitchen • 2 reception rooms • master bedroom suite including bath/shower & dressing room • 2 further bedrooms • dining room • kitchen • bathroom • guest WC • store room • attic study/storage • garden overlooking Hampstead Pond • residents permit parking • EPC Rating D

The property is situated in the sought after South Hill Park Conservation Area of Hampstead; a popular family neighbourhood which literally abuts Hampstead Heath which has the advantage of having no through-traffic.

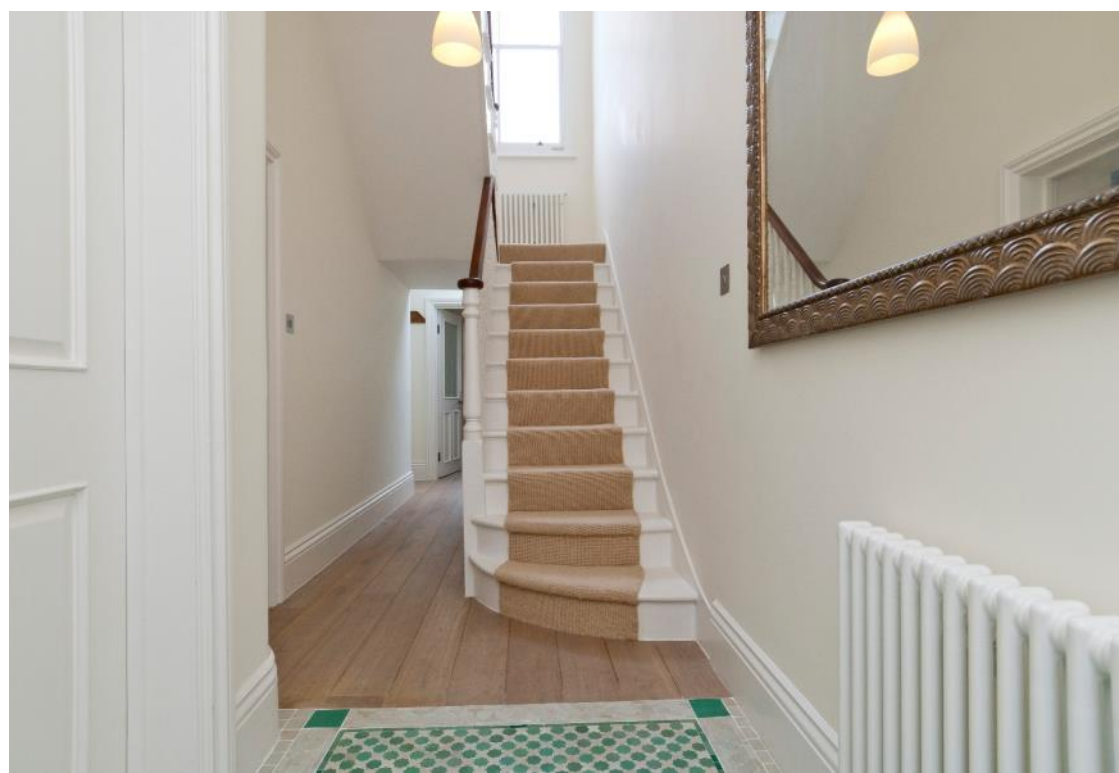
South End Green is close by, with an excellent mix of cafes, gastro pubs, neighbourhood restaurants and shops, including delicatessens and Marks & Spencer; while Hampstead Village is 0.5 miles, less than a 10 minute stroll.

The Hampstead Heath London Overground Station is a short walk and travel to Canary Wharf requires just a single change. The closest London Underground station is Belsize Park (Northern Line), approximately a 12 minute walk and there are frequent bus services from South End Green.

£1,850 per week. Unfurnished.

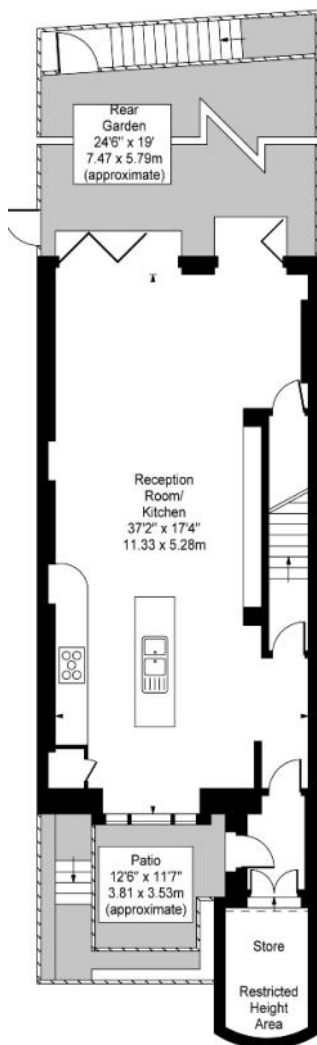




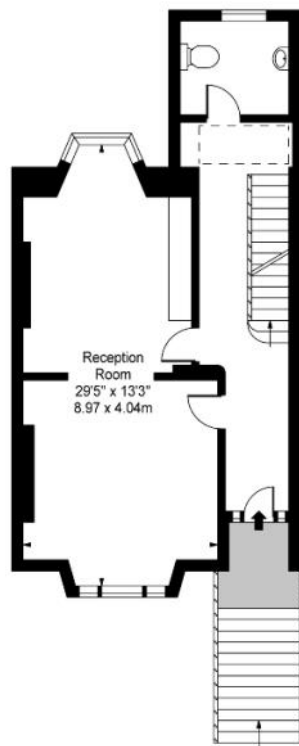




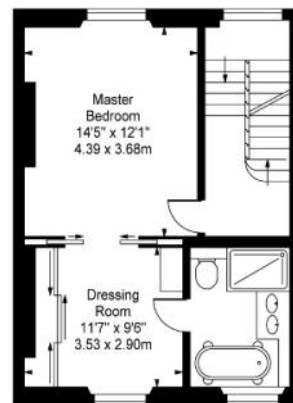




Lower Ground Floor



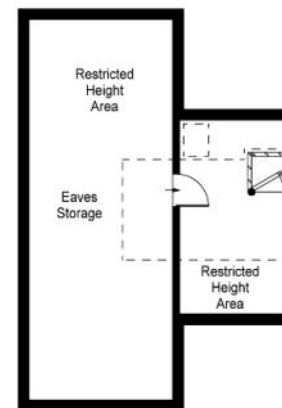
Raised Ground Floor



First Floor



Second Floor

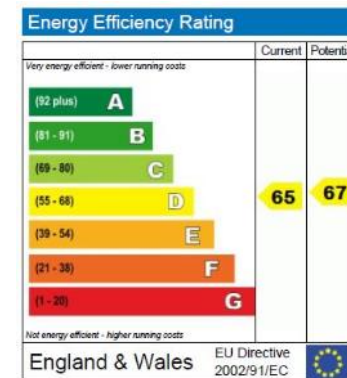


Third Floor

Approx. Gross Internal Area
2204 Sq Ft - 204.75 Sq M
Excluding restricted heights

For Illustration Purposes Only - Not to Scale
Floor Plan by www.nogaphotostudio.com

This floor plan should be used as a general outline for guidance only.
Any intending purchaser or lessee should satisfy themselves by inspection, searches, enquiries and full survey as to the correctness of each statement.
Any areas, measurements or distances quoted are approximate and should not be used to value a property or be the basis of any sale or let.



Telephone 020 7794 7794



Ombudsman
Services



6 South Hill Park, London NW3 2SB | sales@amberden.co.uk

